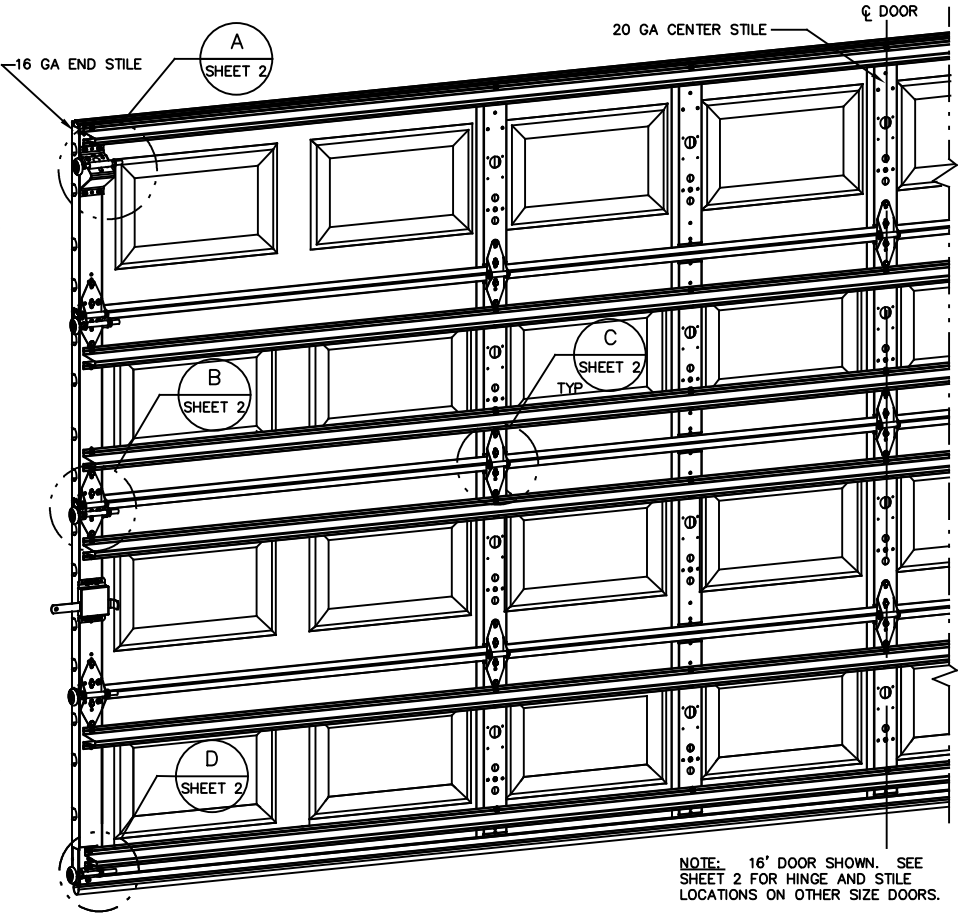
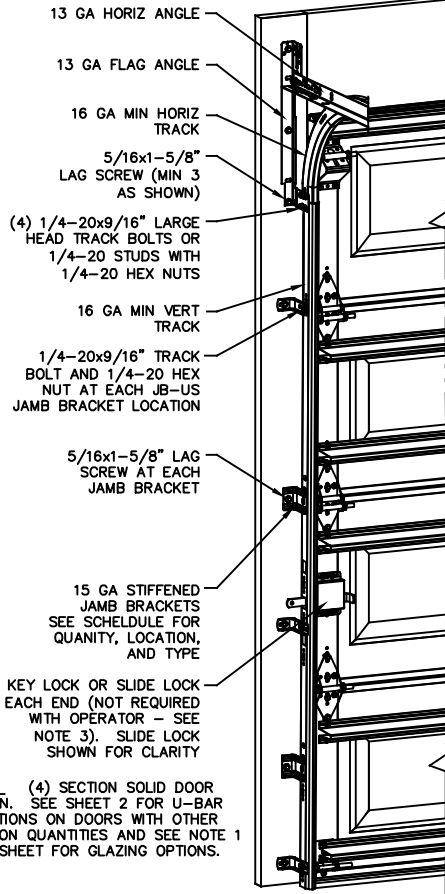


**NOTES:**

- NON IMPACT GLAZING OPTIONS:
  - 16 X 9.75 CLEAR OPENING INSTALLED TOP OR INTERMEDIATE SECTION.
  - 36.75 X 9.75 CLEAR OPENING INSTALLED IN TOP SECTION ONLY.
 GLAZING SSB (0.090") MINIMUM. MAY INCLUDE DECORATIVE INSERTS NOT AVAILABLE IN MORE THAN ONE SECTION. DOES NOT SATISFY WINDBORNE-DEBRIS.
- IMPACT GLAZING OPTION:
 16.75 X 9.75 CLEAR OPENING GLAZING 1/4" GROOVED POLYCARBONATE ALUMINUM FRAMES WITH 10 SCREWS MAY INCLUDE DECORATIVE INSERTS INSTALLED IN TOP OR INTERMEDIATE SECTION. NOT AVAILABLE IN MORE THAN ONE SECTION. SEE ASSEMBLY DETAIL ON SHEET 2.
- VINYL OR WOOD DOOR STOP NAILED A MAXIMUM OF 6" O.C. MUST OVERLAP TOP AND BOTH ENDS OF PANELS MINIMUM 7/16" TO MEET NEGATIVE PRESSURES.
- KEY LOCK, SLIDE LOCKS, OR OPERATOR REQUIRED.
- LOUVER OPTION - .032" MINIMUM LOUVERS IN MOLDED FRAMES SCREWED TOGETHER WITH A MINIMUM OF (10) #8x1" SCREWS INSTALLED IN THE BOTTOM SECTION. LOUVERS ARE NOT IMPACT RESISTANT AND DO NOT MEET THE REQUIREMENTS FOR WIND-BORNE DEBRIS REGIONS.
- SECTION STEEL TO HAVE A MINIMUM 25 GA THICKNESS.
- THE DESIGN OF THE SUPPORTING STRUCTURAL ELEMENTS SHALL BE THE RESPONSIBILITY OF THE PROFESSIONAL OF RECORD FOR THE BUILDING OR STRUCTURE AND IN ACCORDANCE WITH CURRENT BUILDING CODES FOR THE LOADS LISTED ON THIS DRAWING.
- DOOR JAMB TO BE MINIMUM 2" X 6", GRADE 2 SOUTHERN PINE. REFER TO JAMB CONNECTION SUPPLEMENT FOR ATTACHMENT TO SUPPORTING STRUCTURE.
- FOR LOW HEAD ROOM LIFT CONDITIONS, TOP BRACKET SHALL BE A 13 GA LHR 7/4 TOP BRACKET WITH A MINIMUM OF (3) 1/4-14x7/8" SELF DRILLING NOTE: (4) SECTION SOLID DOOR CRIMPITTE SCREWS IN LIEU OF THE BRACKET SHOWN. SEE SHEET 2 FOR U-BAR LOCATIONS ON DOORS WITH OTHER SECTION QUANTITIES AND SEE NOTE 1 THIS SHEET FOR GLAZING OPTIONS.



NOTE: 16' DOOR SHOWN. SEE SHEET 2 FOR HINGE AND STILE LOCATIONS ON OTHER SIZE DOORS.

**REVISIONS**

- P1 MODIFIED NOTES TO STATE THAT LOUVERS ARE NOT IMPACT RESISTANT. GRT 6/29/07
- P2 MODIFIED JAMB BRACKET SCHEDULE ALLOWING REPLACEMENT OF Q1 WITH JB-US. ADDED MAX GLAZING DIMENSION TO NOTES SHEET 1. GRT 11/10/07
- P3 MODIFIED LOUVER OPTION. ADDED TEXAS LICENSE NUMBER TO TITLE BLOCK. GRT 9/19/08
- P4 UPDATED TITLE BLOCK GRT 4/16/12
- P5 ADDED NON-IMPACT GLAZING NOTE 1. ESC 11/8/16
- P6 UPDATED TITLE BLOCK ESC 10/3/17
- P7 UPDATED TITLE BLOCK. REV PER ER 31052 ESC 9/25/18
- P8 UPDATED NOTES - ADDED LHR DETAIL ER 31052 ESC 2/12/19
- REV J ADDED IRC/IBC NOTE TLC 4/12/21

**SUPERIMPOSED DESIGN PRESSURE LOADS ON SUPPORTING STRUCTURE**

| DOOR WIDTH | DOOR HEIGHT | UNIFORM LOAD EACH JAMB (PLF) |
|------------|-------------|------------------------------|
| 10'-0"     | ALL         | +115.0/-125.0                |
| 12'-0"     | ALL         | +138.0/-150.0                |
| 14'-0"     | ALL         | +161.0/-175.0                |
| 15'-0"     | ALL         | +172.5/-187.5                |
| 16'-0"     | ALL         | +184.0/-200.0                |

**JAMB BRACKET SCHEDULE**

| DOOR HEIGHT | NO. OF SECTIONS | NO. OF JAMB BRACKETS (EACH JAMB) | TRACK TYPE | LOCATION OF CENTERLINE OF JAMB BRACKETS MEASURED FROM BOTTOM OF TRACK (ALL DIMENSIONS ± 2") |
|-------------|-----------------|----------------------------------|------------|---|
| 6'-6"       | 4               | 4                                | QI         | 14" (QI), 34" (JB-US), 44" (QI), 56" (JB-US)  |
| 6'-6"       | 4               | 4                                | FAT        | 10" (JB-US), 25-3/4" (JB-US), 39" (JB-US), 57-1/4" (JB-US)                                  |
| 7'-0"       | 4               | 5                                | QI         | 2" (JB-US), 14" (QI), 29-1/2" (JB-US), 44" (QI), 63-1/4" (JB-US)                            |
| 7'-0"       | 4               | 5                                | FAT        | 2" (JB-US), 10" (JB-US), 29-3/4" (JB-US), 42" (JB-US), 63-1/4" (JB-US)                      |
| 7'-6"       | 5               | 6                                | QI         | 2" (JB-US), 14" (QI), 28-1/2" (JB-US), 43" (QI), 62-1/2" (QI), 72" (JB-US)                  |
| 7'-6"       | 5               | 6                                | FAT        | 2" (JB-US), 10" (JB-US), 26-3/4" (JB-US), 45" (JB-US), 63" (JB-US), 74-1/2" (JB-US)         |
| 8'-0"       | 5               | 6                                | QI         | 2" (JB-US), 14" (QI), 34" (JB-US), 46" (QI), 58" (JB-US), 66-1/2" (QI)                      |
| 8'-0"       | 5               | 6                                | FAT        | 2" (JB-US), 10" (JB-US), 29-3/4" (JB-US), 48" (JB-US), 57-1/2" (JB-US), 77-1/2" (JB-US)     |
| > 8'-0"     |                 |                                  |            | SEE NOTE BELOW  |

NOTE:  
(JB-US) FOLLOWING DIMENSION DENOTES SLOTTED JAMB BRACKET ATTACHED TO TRACK WITH 1/4-20x9/16" TRACK BOLT AND NUT.  
(QI) FOLLOWING DIMENSION DENOTES QUICK INSTALL JAMB BRACKET INSTALLED IN BUTTERFLY SLOT. NO ADDITIONAL HARDWARE NEEDED TO ATTACH TO TRACK.  
ALL DOORS GREATER THAN 8' IN HEIGHT REQUIRE USE OF CONTINUOUS WALL ANGLE. SEE SUPPLEMENT TRACK CHART FOR DETAILS.

COMPLIES WITH THE REQUIREMENTS OF IBC/IRC 2018.



A DIVISION OF OVERHEAD DOOR CORP.  
3395 ADDISON DRIVE  
PENSACOLA, FLORIDA 32514  
(850) 474-9890

| STATIC PRESSURE RATINGS                 |               | APPROVED SIZES          | SCALE: N.T.S.    | SIZE: A |
|---|---------------|-------------------------|------------------|---------|
| DESIGN (PSF):                           | +23.00/-25.00 | MAX WIDTH: 16'-0"       | DATE             | NAME    |
| TEST (PSF):                             | +34.50/-37.50 | MAX HEIGHT: 14'-0"      | DRAWN            | GRT     |
| IMPACT/CYCLIC RATED (YES/NO):           | YES           | MAX SECTION HEIGHT: 21" | CHECKED          | TLC     |
| MODELS 8000/8100/8200                   |               |                         | SHEET 1 OF 2     |         |
| WINDLOAD SPECIFICATION OPTION CODE 1122 |               |                         | DRAWING PART NO. | REV.    |
|   |               |                         | 327016           | J       |

PROFESSIONAL ENGINEER'S SEAL PROVIDED ONLY FOR VERIFICATION OF WINDLOAD CONSTRUCTION DETAILS.

JOHN E. SCATES, PE  
2560 KING ARTHUR BLVD #124-54  
LEWISVILLE, TX 75056  
FL PE 51737  
TX PE 56308/F2203

12 GA ROLLER SLIDE ATTACHED TO BRACKET WITH 5/16-18 BOLT & NUT IN CENTER SLOT AND 1/4-20x9/16" TRACK BOLT & 1/4-20 HEX NUT THROUGH ANY TWO ALIGNING HOLES

12 GA COMMERCIAL 'A' FRAME TOP BRACKET ATTACHED WITH (4) 1/4-14x7/8" SELF DRILLING CRIMPITTE SCREWS

ADD (2) 1/4-14x7/8" SELF DRILLING CRIMPITTE SCREWS (INSIDE OF EACH END HINGE)

2" NYLON STORMGARD ROLLER WITH 4-1/2" STEM EACH ROLLER LOCATION. OPTIONAL- 11 BALL BEARING NYLON ROLLER. 7/16" PUSHNUT AT EACH ROLLER LOCATION. 1/4" MAX BETWEEN PUSHNUT AND BRACKET OR HINGE

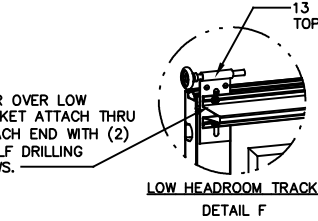
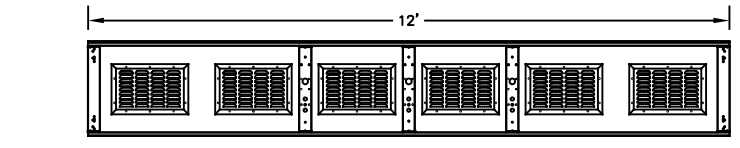
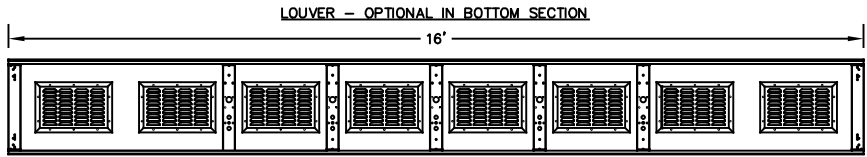
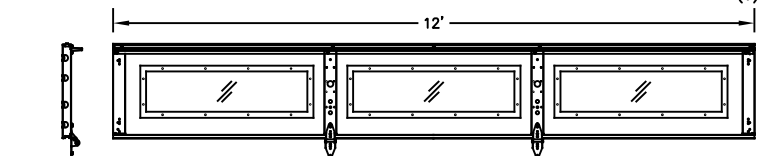
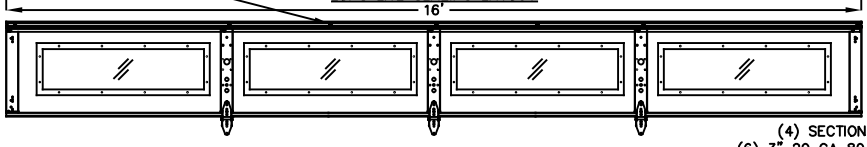
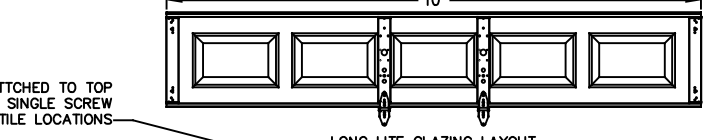
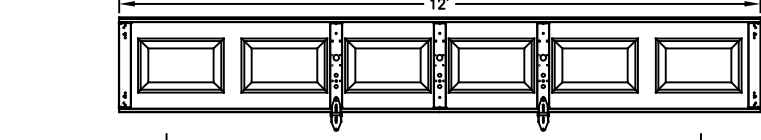
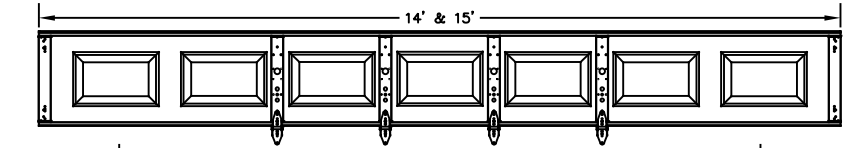
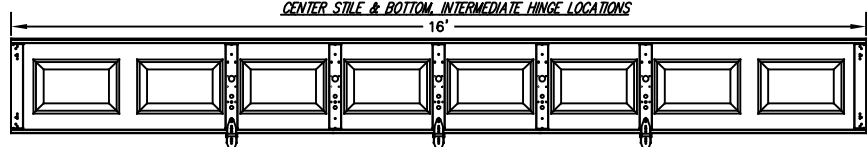
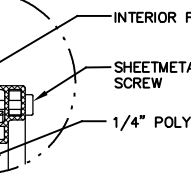
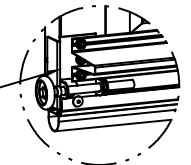
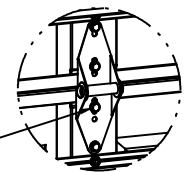
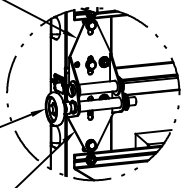
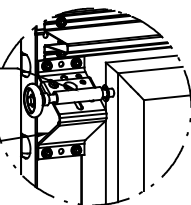
#1 HINGE IS 14 GA  
#2 HINGE IS 13 GA  
#3 HINGE (AND ALL ABOVE) ARE 13 GA WIDE BODY END HINGE ATTACHED WITH (4) 1/4-14x5/8" SELF TAPPING SCREWS

18 GA NARROW BODY INTERMEDIATE HINGE ATTACHED WITH (4) 1/4-14x5/8" SELF TAPPING SCREWS

14 GA BOTTOM BRACKET ATTACHED WITH (4) 1/4-14x7/8" SELF DRILLING CRIMPITTE SCREWS (2) OF WHICH IS THROUGH STRUT AND (1) 1/4-14x5/8" SELF DRILLING RED SCREW

INTERIOR FRAME  
SHEETMETAL SCREW  
1/4" POLYCARBONATE  
EXTERIOR FRAME

IMPACT WINDOW / ALUMINUM FRAME WITH GROOVED POLYCARBONATE  
DETAIL E



PLACE 3" U-BAR OVER LOW HEADROOM BRACKET ATTACH THRU END STILE AT EACH END WITH (2) 1/4-14x7/8" SELF DRILLING CRIMPITTE SCREWS.

ATTACH U-BAR WITH (2) 1/4-14x7/8" SELF DRILLING CRIMPITTE SCREWS AT EACH STILE LOCATION, TYP.

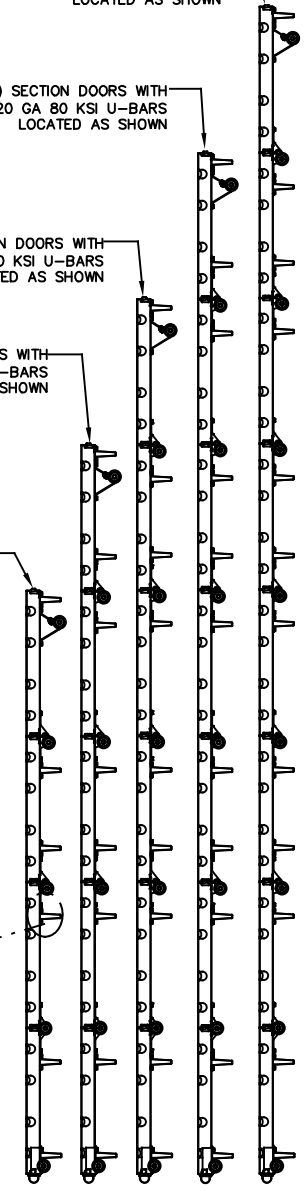
U-BAR LOCATIONS  
(8) SECTION DOORS WITH (12) 3" 20 GA 80 KSI U-BARS LOCATED AS SHOWN

(7) SECTION DOORS WITH (11) 3" 20 GA 80 KSI U-BARS LOCATED AS SHOWN

(6) SECTION DOORS WITH (9) 3" 20 GA 80 KSI U-BARS LOCATED AS SHOWN

(5) SECTION DOORS WITH (8) 3" 20 GA 80 KSI U-BARS LOCATED AS SHOWN

(4) SECTION DOORS WITH (6) 3" 20 GA 80 KSI U-BARS LOCATED AS SHOWN



|   |               |                     |        |                  |      |         |  |
|---|---------------|---------------------|--------|------------------|------|---------|--|
| STATIC PRESSURE RATINGS                 |               | APPROVED SIZES      |        | SCALE: N.T.S.    |      | SIZE: A |  |
| DESIGN (PSF):                           | +23.00/-25.00 | MAX WIDTH:          | 16'-0" | DATE             | NAME |         |  |
| TEST (PSF):                             | +34.50/-37.50 | MAX HEIGHT:         | 14'-0" | DRAWN            | GRT  |         |  |
| IMPACT/CYCLIC RATED (YES/NO):           | YES           | MAX SECTION HEIGHT: | 21"    | CHECKED          | TLC  |         |  |
| MODELS 8000/8100/8200                   |               |                     |        | SHEET 2 OF 2     |      |         |  |
| WINDLOAD SPECIFICATION OPTION CODE 1122 |               |                     |        | DRAWING PART NO. |      | REV.    |  |
|   |               |                     |        | 327016           |      | J       |  |